



### Main board for SEC-ASD-531

#### SEC-AMB-31

Repair exchange for the SEC-ASD-531.

#### Technical data

Dimensions (H x W x D): 250 x 160 x 15 mm



### Main board for SEC-ASD-532

#### SEC-AMB-32

Repair exchange for the SEC-ASD-532.

#### Technical data

Dimensions (H x W x D): 250 x 160 x 15 mm



### Main board for SEC-ASD-535-1 and -3

#### SEC-AMB-35-1

Repair exchange for the SEC-ASD-535-1 and -3.

#### Technical data

Dimensions (H x W x D): 125 x 176 x 20 mm



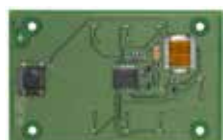
### Main board for SEC-ASD-535-2 and -4

#### SEC-AMB-35-2

Repair exchange for the SEC-ASD-535-2 and -4.

#### Technical data

Dimensions (H x W x D): 125 x 176 x 20 mm



### Basic control board for standard display of SEC-ASD-535-1 and -2

#### SEC-BCB-35

Repair exchange for the standard display unit (without smoke level display)

#### Technical data

Dimensions (H x W x D): 90 x 59 x 9 mm



### Basic control board for advanced display of SEC-ASD-535-3 and -4

#### SEC-ACB-35

Repair exchange for the advance display unit (with smoke level display)

#### Technical data

Dimensions (H x W x D): 90 x 142 x 9 mm



### Air flow sensor for SEC-ASD-531 and SEC-ASD-532

#### SEC-AFS-32

Repair exchange for air flow sensor for SEC-ASD-531 / 532 incl. connection wire



### Air flow sensor for SEC-ASD-535

#### SEC-AFS-35

Repair exchange for air flow sensor for SEC-ASD-535 incl. connection wire

#### Technical data

Dimensions (H x W x D): 15 x 14 x 115 mm



### Aspirating fan unit for SEC-ASD-531 and SEC-ASD-532

#### SEC-AFU-32

Repair exchange for the aspirating fan unit complete for SEC-ASD-531 / 532



### Aspirating fan unit for SEC-ASD-535

#### SEC-AFU-35

Repair exchange for the aspirating fan unit complete for SEC-ASD-535.

#### Technical data

Dimensions (H x W x D): 138 x 185 x 58 mm



### Rotary Snap Lock for SEC-ASD-531/532/535

#### SEC-RSL-35

Repair exchange for the SEC-ASD-531/532/535 housing.

#### Technical data

Material: ABS / steel

Packaging unit: 4 pieces



### Insect protection screen for SEC-ASD-531/532/535

#### SEC-IPS-35

Insect protection screen for the SEC-ASD-531/532/535 housing.

#### Technical data

Material: steel

Packaging unit: 2 pieces